



**KZ1000-S1 Engine
&
KZ1000J Kit**

Parts Catalog

© Kawasaki Heavy Industries, Ltd. 1982

Jan. 12, 1982

INDEX		* APPLICATION			
FIG NO.	MAIN TITLE	PAGE	KZ1000-S1	KZ1000J	
			ENGINE	FULL KIT	A KIT
1.	CYLINDER HEAD	1	●	●	
2.	CYLINDER HEAD COVER	2	●	●	
3.	CYLINDER	3	●	●	
4.	PISTON	4	●	●	
5.	VALVE	5	●	●	
6.	CAMSHAFT, TENSIONER	6	●	●	
7.	CRANKSHAFT	7	●	●	
8.	CLUTCH	8	●	●	
9.	TRANSMISSION	9	●	●	●
10.	CHANGE DRUM, SHIFT FORK	12	●	●	●
11.	GEAR CHANGE MECHANISM	13	●		
12.	CRANKCASE	14	●	●	
13.	CRANKCASE BOLT PATTERN	15	●	●	
14.	ENGINE COVER	16	●	●	
15.	ENGINE COVER "A"	17	●	●	
16.	OIL PUMP	18	●		
17.	GENERATOR	19	●	●	
18.	IGNITION COIL	20	●	●	
19.	OIL COOLER	21	●	●	
20.	TOOL	22	●	●	

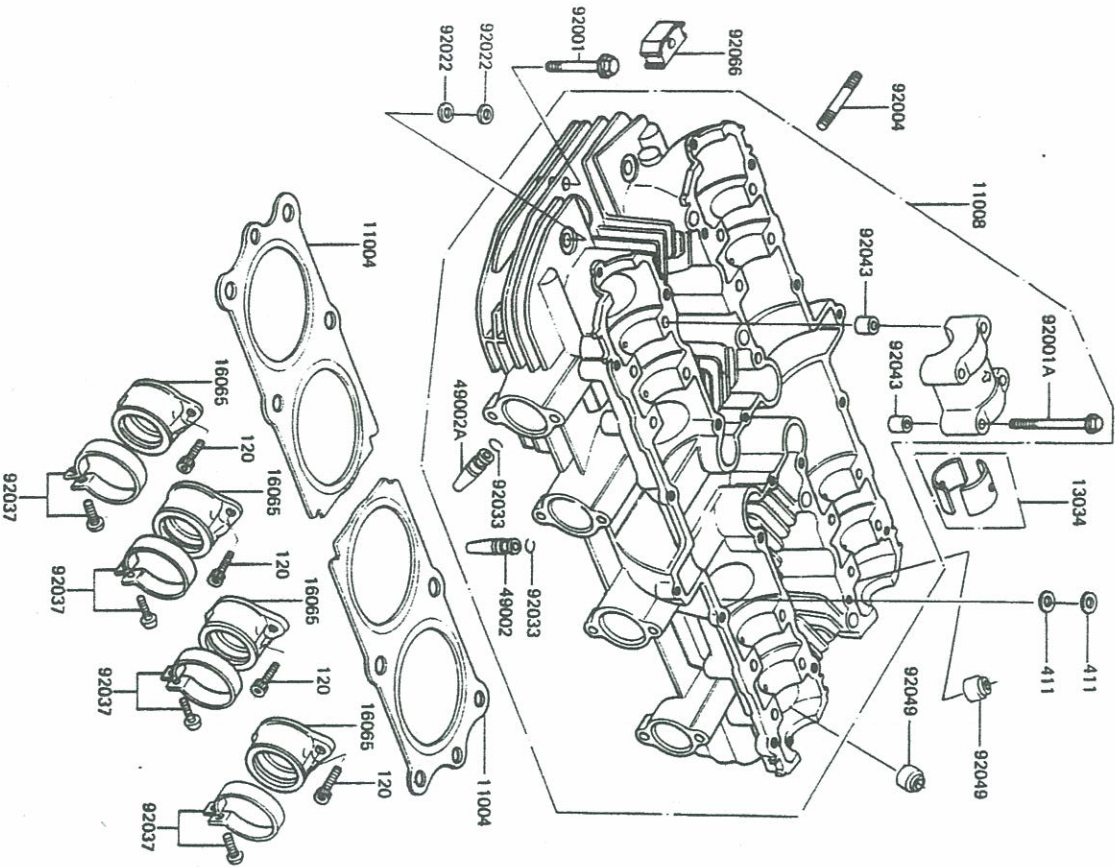
Remarks : *

PARTS NUMBER	DESCRIPTION
71000-1098-LF	ENGINE ASSY - KZ1000-S1
99996-1032	FULL KIT - KZ1000J
99996-1033	A KIT - KZ1000J



E11111-0082

1. Cylinder Head



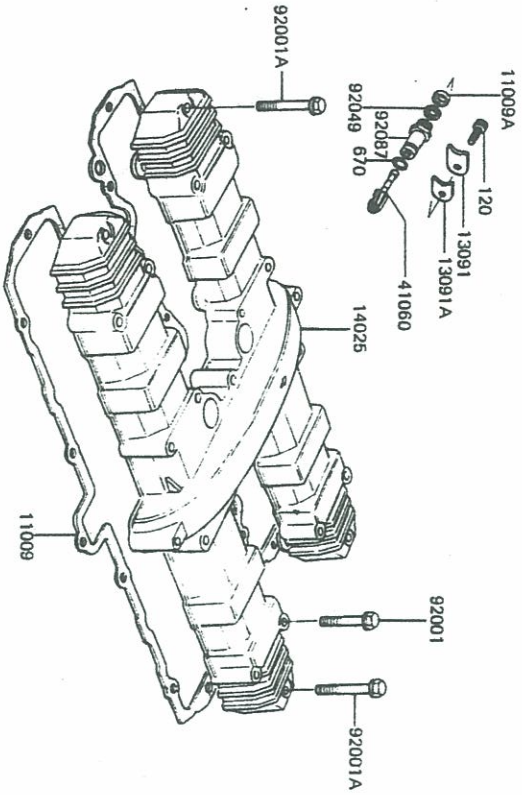
Ref. No.	Part No.	Description	Spec Code	Quantity - KZ1000
11004	11004-1040	GASKET-HEAD		2
11008	11008-1049	HEAD-COMP-CYLINDER, BLACK		1
13034	13034-030	(RACING USE ONLY)		
16065	16065-1036	BUSHING, CAMSHAFT		16
49002	49002-1018	HOLDER-CARBURETOR, BLACK		4
		(RACING USE ONLY)		
49002A	49002-1019	GUIDE-VALVE, EX		4
92001	92003-092	(RACING USE ONLY)		
92001A	92003-228	BOLT, FLANGED, 6X45		2
92004	92004-1043	BOLT, FLANGED, 6X43		16
92022	92022-1005	STUD, 8X30		16
		WASHER, 10, 5X22X1, 6		8
92033	92036-023	RING-SNAP, VALVE GUIDE		8
92037	92037-201	CLAMP, 53MM		4
92043	92042-007	PIN, 00WEL, 6, 3X8X14		4
92049	92049-016	SEAL-OIL, RV37129, 5		8
92066	92066-1106	PLUG, CYLINDER HEAD COVER		4
120	120S0616	BOLT-SOCKET, 6X16, BLACK		8
411	41181000	WASHER-PLANE, 10MM		16



E1112-00-00

2. Cylinder Head Cover

Ref. No.	Part No.	Description	Spec Code	Quantity - KZ1000	
				82	S1
11009	11009-1205	GASKET, CYLINDER HEAD COVER		1	
11009A	92065-103	GASKET, TACHOMETER GEAR		1	
13091	13091-1008	HOLDER, TACHOMETER, T=2.3		1	
13091A	13091-1009	HOLDER, TACHOMETER, T=3.2		1	
14025	14025-1464	COVER, CYLINDER HEAD, BLACK		1	
41060	13223-011	GEAR-METER SCREW, 10T		1	
92001	92001-1350	BOLT, FLANGED, 6X45		20	
92001A	92001-1353	BOLT, FLANGED, 6X52		4	
92049	92050-075	SEAL-OIL, TACHOMETER		1	
92087	92087-010	BUSHING-METER GEAR, TACHOMETER		1	
120	120P0614	BOLT-SOCKET, 6X14		1	
670	670D1510	O RING, 10MM		1	



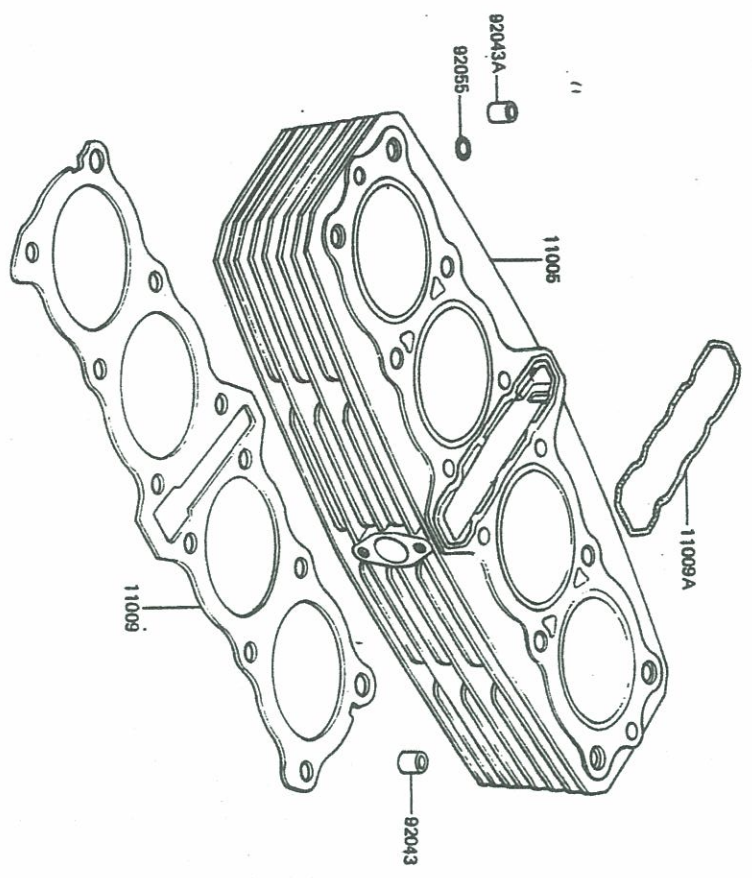


E1120-0029

3. Cylinder

Ref. No.	Part No.	Description	Spec Code	Quantity-KZ1000
				92
				\$1

11005	11005-1118	CYLINDER-ENGINE/BLACK		1
11009	11009-1207	GASKET,CYLINDER BASE		1
11009A	11009-1208	GASKET,CYLINDER		1
92043	92042-028	PIN,DOVEL,11X14X12.5		2
92043A	92043-1037	PIN,DOVEL,10X14		2
92055	92055-1096	RING-0,1D=13.4		4

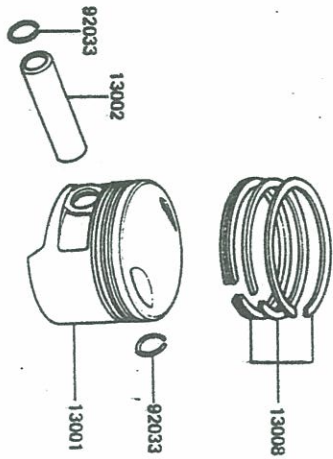




E1120A-00301

4. Piston

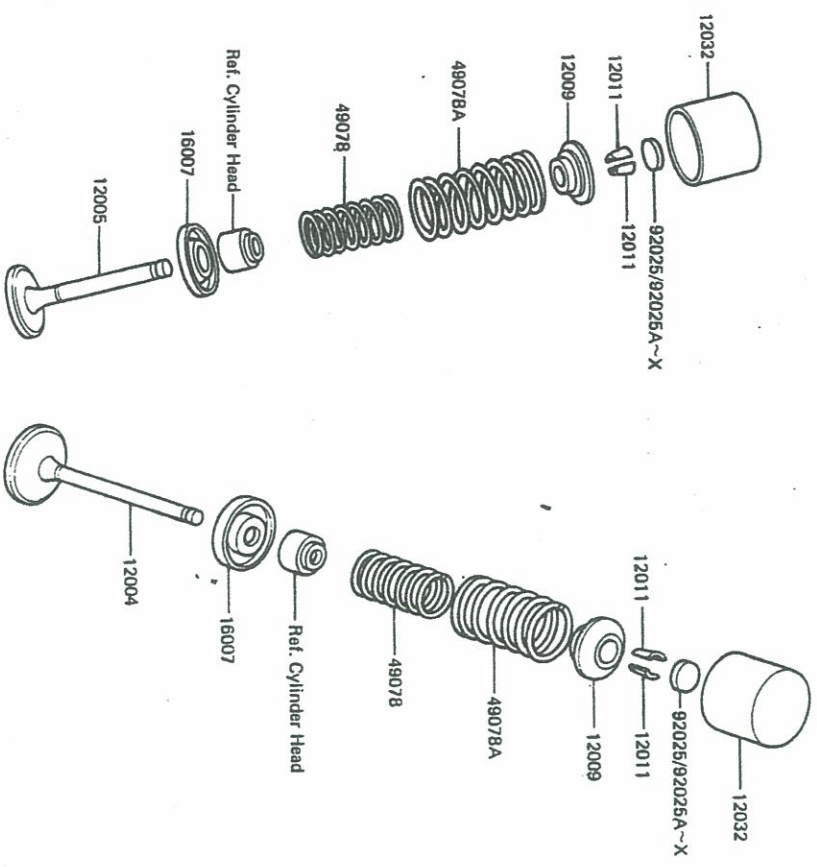
Ref. No.	Part No.	Description	Spec Code	Quantity-	
				g2	S1
13001	13001-1087	PISTON-ENGINE,STD		4	
	(RACING USE ONLY)				
13002	13002-1013	PIN-PISTON		4	
13008	13008-5048	RING-SET-PISTON,STD		4	
	(RACING USE ONLY)				
92033	92033-1054	RING-SNAP		8	





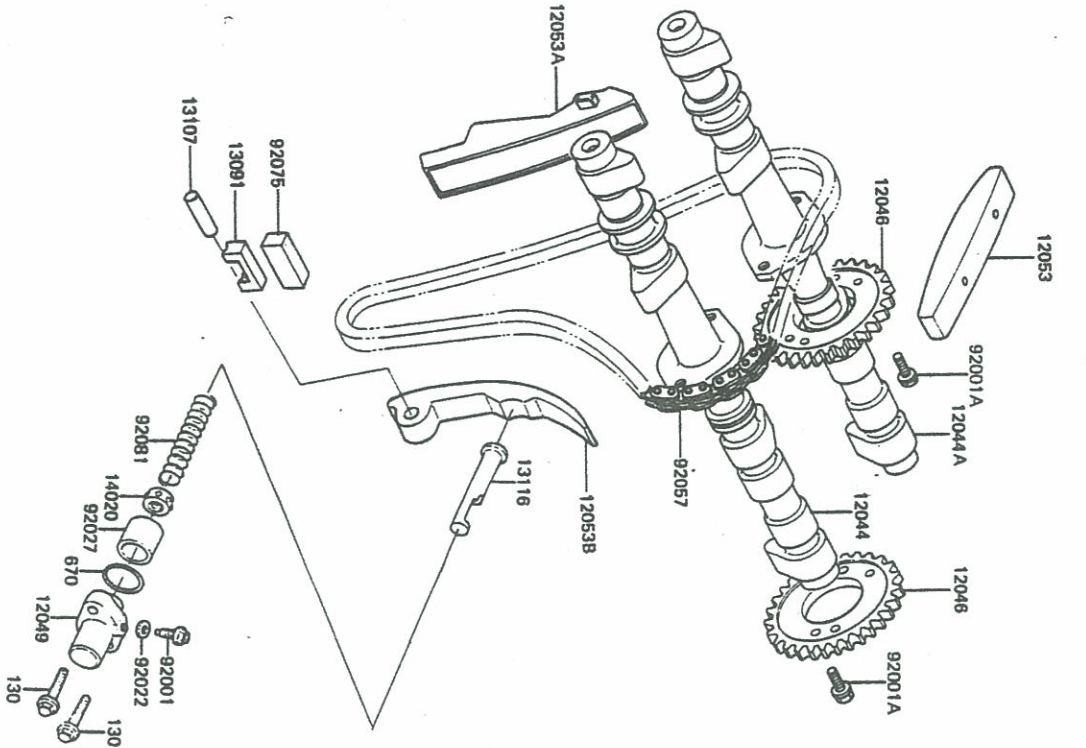
5. Valve

E1210-0016



Ref. No.	Part No.	Description	Spec Code	Quantity - KZ1000	
				92	S1
12004	12004-1019	VALVE-IN TAKE (RACING USE ONLY)		4	
12005	12005-1015	VALVE-EXHAUST (RACING USE ONLY)		4	
12009	12009-1005	RETAINER-VALVE SPRING (RACING USE ONLY)		8	
12011	12011-004	COLLET, RETAINER		16	
12032	12032-1003	TAPET (RACING USE ONLY)		8	
16007	16007-1024	SEAT-SPRING, VALVE		8	
49078	49078-1007	SPRING-ENGINE VALVE, INNER		8	
49078A	49078-1008	SPRING-ENGINE VALVE, OUTER (RACING USE ONLY)		8	
92025	92025-1090	SHIM, T=2.00		AR	
92025A	92025-1091	SHIM, T=2.05		AR	
92025B	92025-1092	SHIM, T=2.10		AR	
92025C	92025-1093	SHIM, T=2.15		AR	
92025D	92025-1094	SHIM, T=2.20		AR	
92025E	92025-1095	SHIM, T=2.25		AR	
92025F	92025-1096	SHIM, T=2.30		AR	
92025G	92025-1097	SHIM, T=2.35		AR	
92025H	92025-1098	SHIM, T=2.40		AR	
92025I	92025-1099	SHIM, T=2.45		AR	
92025J	92025-1100	SHIM, T=2.50		AR	
92025K	92025-1101	SHIM, T=2.55		AR	
92025L	92025-1102	SHIM, T=2.60, STD FOR KIT		AR	
92025M	92025-1103	SHIM, T=2.65		AR	
92025N	92025-1104	SHIM, T=2.70		AR	
92025O	92025-1105	SHIM, T=2.75		AR	
92025P	92025-1106	SHIM, T=2.80		AR	
92025Q	92025-1107	SHIM, T=2.85		AR	
92025R	92025-1108	SHIM, T=2.90		AR	
92025S	92025-1109	SHIM, T=2.95		AR	
92025T	92025-1110	SHIM, T=3.00		AR	
92025U	92025-1111	SHIM, T=3.05		AR	
92025V	92025-1112	SHIM, T=3.10		AR	
92025W	92025-1113	SHIM, T=3.15		AR	
92025X	92025-1114	SHIM, T=3.20		AR	

6. Camshaft, Tensioner

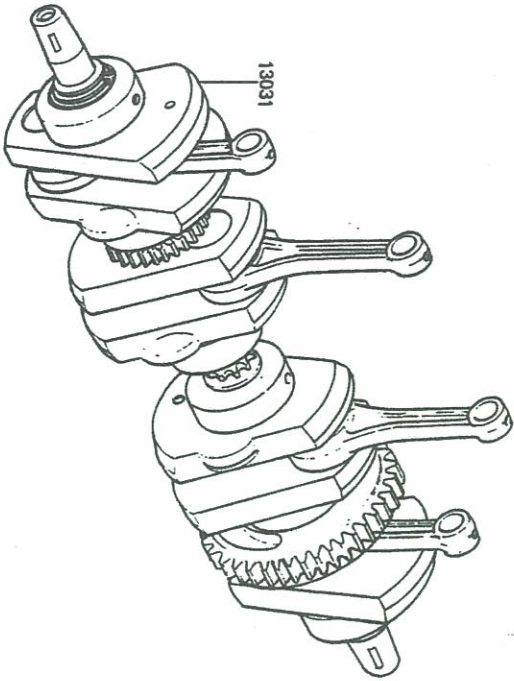
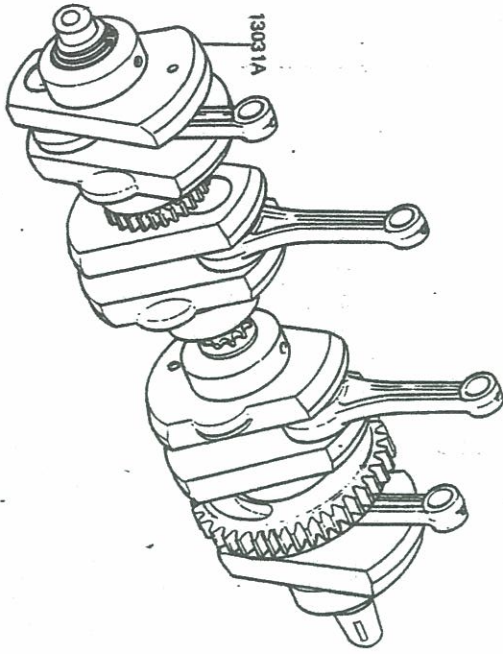


Ref. No.	Part No.	Description	Spec Code	Quantity
12044	12044-1047	CAMSHAFT-VALVE,IN (RACING USE ONLY)		1
12044A	12044-1048	CAMSHAFT-VALVE,EX (RACING USE ONLY)		1
12046	12046-1036	SPROCKET,CAMSHAFT,42T (RACING USE ONLY)		2
12049	12049-1008	TENSIONER,CAM CHAIN GUIDE-CHAIN,CAM,HEAD		1
12053	12053-1018	GUIDE-CHAIN,CAM,FR		1
12053A	12053-1048	GUIDE-CHAIN,CAM,RR		1
12053B	12053-1049	HOLDER,CAM CHAIN GUIDE		1
13091	13091-1084	SHAFT,8X28		1
13107	13107-1020	ROD-PUSH,CAM CHAIN		1
13116	13116-1019	RETAINER,TENSIONER		1
14020	14020-1002	BOLT,FLANGED,6X11		6
92001	92001-1155	WASHER,6,1X12X1		1
92001A	92003-208	COLLAR,TENSIONER		1
92022	92022-077	CHAIN,CAMSHAFT,79-01DX152L (RACING USE ONLY)		1
92027	92027-1273	DAMPER,CAM CHAIN GUIDE		1
92057	92057-1109	SPRING,TENSIONER		1
92075	92075-1270	BOLT-FLANGED,6X25		2
92081	92081-1380	O RING,21MM		1
130	130G0625			1
670	670B2021			1

E1321-0035

7. Crankshaft

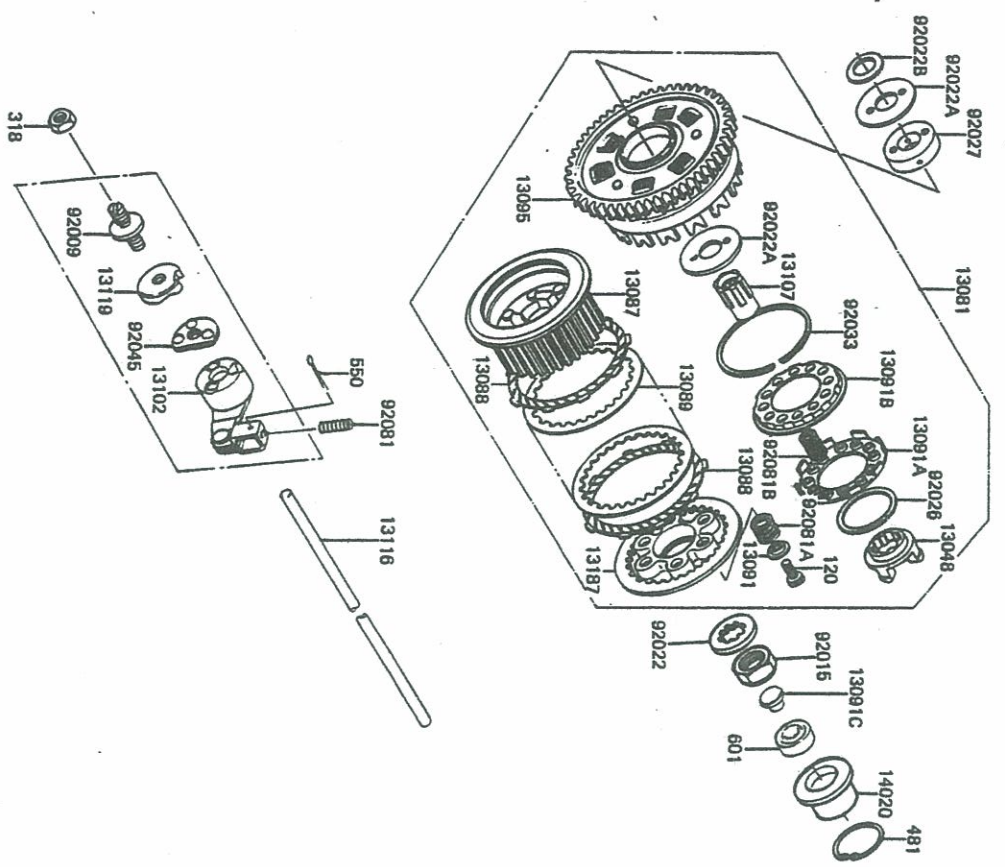
Ref. No.	Part No.	Description	Spec Code	Quantity-KZ1000
13031	13031-1073	CRANKSHAFT-COMP,ONLY FOR KIT (RACING USE ONLY)		1
13031A	13031-1078	CRANKSHAFT-COMP (RACING USE ONLY)		1





8. Clutch

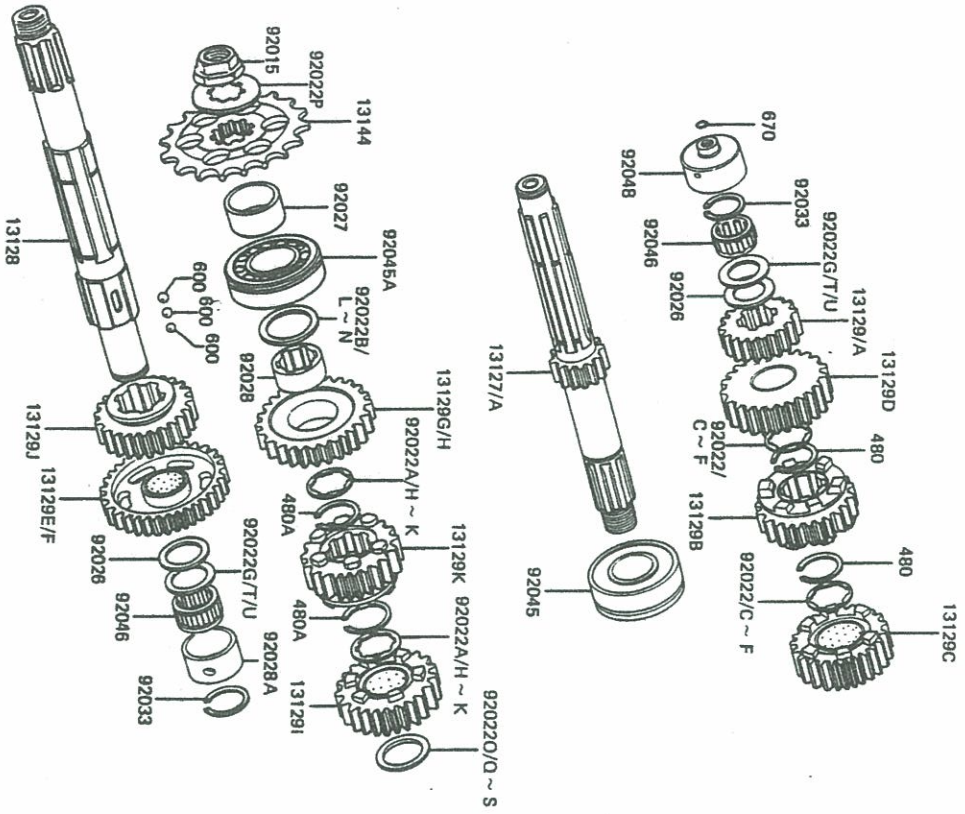
E1350-0030



Ref. No.	Part No.	Description	Spec Code	Quantity	KZ100
13048	13048-1007	CAM-DAMPER		1	
13081	13081-1063	CLUTCH-ASSY		1	
13087	13087-1009	HUB-CLUTCH		1	
13088	13088-1013	PLATE-FRICTION		9	
13089	13089-1004	PLATE-CLUTCH		8	
13091	13091-1041	HOLDER/CLUTCH SPRING		6	
13091A	13091-1042	HOLDER/DAMPER SPRING,RH		1	
13091B	13091-1043	HOLDER/DAMPER SPRING,LH		1	
13091C	13091-1085	HOLDER/CLUTCH PUSH ROD		1	
13095	13095-1037	HOUSING-COMP-CLUTCH		1	
13102	13102-1012	RELEASE-COMP-CLUTCH		1	
13107	13107-1024	SHAFT/CLUTCH		1	
13116	13116-1039	ROD-PUSH/CLUTCH,8X350		1	
13119	13119-1003	(RACING USE ONLY)		1	
13187	13187-1004	CAM-RELEASE/CLUTCH OPERATING PLATE-CLUTCH		1	
14020	14020-1016	RETAINER,BALL BEARING (RACING USE ONLY)		1	
92009	92009-1009	SCREW,8MM		1	
92015	92015-1053	NUT,20MM		1	
92022	92022-1114	WASHER,100THED,25X40X5		1	
92022A	92022-1221	WASHER/CLUTCH THRUST		2	
92022B	92022-1223	WASHER,25,3X36X2,5		1	
92026	92026-1043	SPACER,59X70X3,5		1	
92027	92027-1284	COLLAR,25X57X16,1		1	
92033	92033-1029	RING-SNAP		1	
92045	92045-1001	BEARING-BALL,CLUTCH RELEASE		1	
92081	92081-069	SPRING/CLUTCH RELEASE		1	
92081A	92081-1114	SPRING/CLUTCH		6	
92081B	92081-1115	SPRING/CLUTCH DAMPER		12	
120	120Q0616	BOLT-SOCKET,6X16		6	
318	318B0800	NUT-HEX-SMALL,8MM		1	
481	481J5000	CIRCLIP-TYPE-C,50MM		1	
550	550D1615	PIN-COTTER,1,6X15		1	
601	601B6001	BEARING-BALL,#6001C3		1	

EJ361-0076

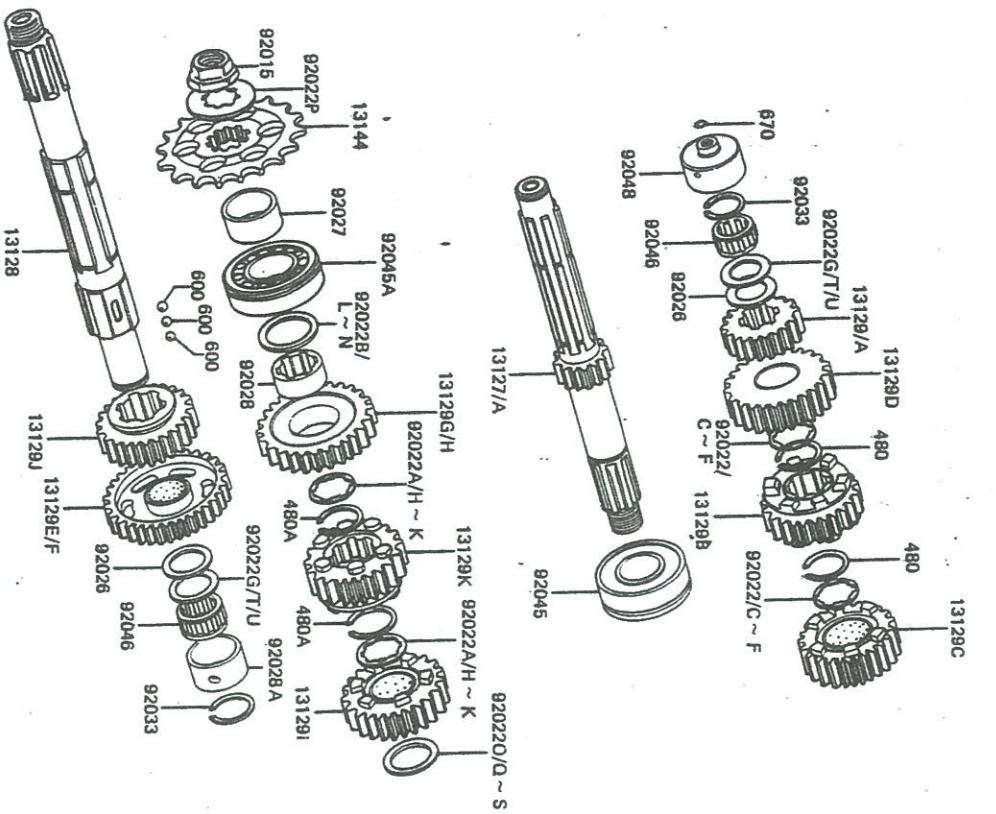
9. Transmission



Ref. No.	Part No.	Description	Spec Code	QTY
13127	13127-1051	SHAFT-TRANSMISSION INPUT,16T (RACING USE ONLY)		AR
13127A	13127-1052	SHAFT-TRANSMISSION INPUT,15T (RACING USE ONLY)		1
13128	13128-1041	SHAFT-TRANSMISSION OUTPUT (RACING USE ONLY)		1
13129	13129-1326	GEAR,INPUT 2ND,20T (RACING USE ONLY)		AR
13129A	13129-1327	GEAR,INPUT 2ND,18T (RACING USE ONLY)		1
13129B	13129-1328	GEAR,INPUT 3RD,22T (RACING USE ONLY)		1
13129C	13129-1329	GEAR,INPUT 4TH,21T (RACING USE ONLY)		1
13129D	13129-1330	GEAR,INPUT TOP,23T (RACING USE ONLY)		1
13129E	13129-1331	GEAR,OUTPUT LOW,40T (RACING USE ONLY)		AR
13129F	13129-1332	GEAR,OUTPUT LOW,36T (RACING USE ONLY)		1
13129G	13129-1333	GEAR,OUTPUT 2ND,37T (RACING USE ONLY)		AR
13129H	13129-1334	GEAR,OUTPUT 2ND,32T (RACING USE ONLY)		1
13129I	13129-1335	GEAR,OUTPUT 3RD,34T (RACING USE ONLY)		1
13129J	13129-1336	GEAR,OUTPUT 4TH,29T (RACING USE ONLY)		1
13129K	13129-1337	GEAR,OUTPUT TOP,29T (RACING USE ONLY)		1
13144	13144-1042	SPROCKET-OUTPUT,15T		1
92015	92015-1210	NUT,20MM		1
92022	92022-1077	WASHER,TOOTHED,26X35,5X1,5 (RACING USE ONLY)		2
92022A	92022-1218	WASHER,TOOTHED,30X42X1,4		2
92022B	92022-1219	WASHER,28,3X42X2,9		1
92022C	92022-1322	WASHER,TOOTHED,26X35,5X1,1 (RACING USE ONLY)		AR
92022D	92022-1323	WASHER,TOOTHED,26X35,5X1,3 (RACING USE ONLY)		AR
92022E	92022-1324	WASHER,TOOTHED,26X35,5X1,6 (RACING USE ONLY)		AR
92022F	92022-1325	WASHER,TOOTHED,26X35,5X1,8 (RACING USE ONLY)		AR

Qty. in V	KZ1000
82	
51	

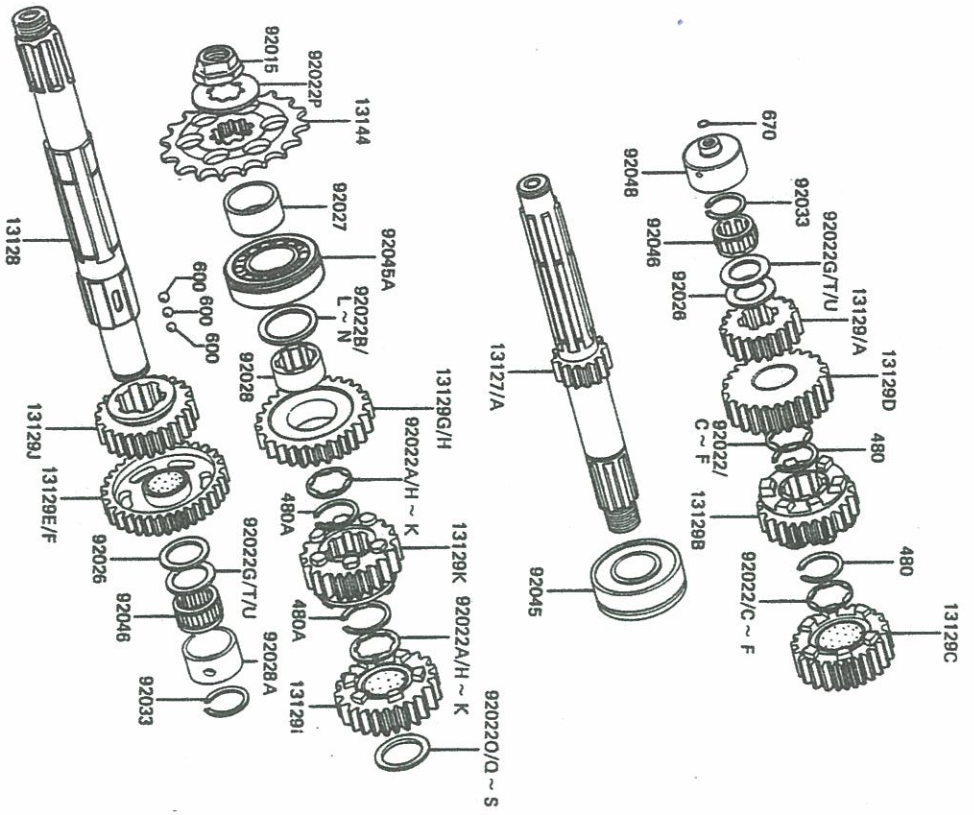
9-1. Transmission



Ref. No.	Part No.	Description	Spec Code	Quantity	Unit
	92022G	92022-1326 WASHER, 22, 3X35X1.4	AR	1	
	92022H	92022-1327 WASHER, T00THED, 30X42X1.1	AR	1	
	92022I	92022-1328 WASHER, T00THED, 30X42X1.3	AR	1	
	92022J	92022-1330 WASHER, T00THED, 30X42X1.6	AR	1	
	92022K	92022-1331 WASHER, T00RHED, 30X42X1.8	AR	1	
	92022L	92022-1332 WASHER, 28, 3X42X2.7	AR	1	
	92022M	92022-1333 WASHER, 28, 3X42X3.1	AR	1	
	92022N	92022-1334 WASHER, 28, 3X42X3.2	AR	1	
	92022O	92022-1335 WASHER, 32, 3X42X2.8	AR	1	
	92022P	92022-1336 WASHER, T00THED, 23, 9X45X1.0	AR	1	
	92022Q	92022-1338 WASHER, 32, 3X42X3.0	AR	1	
	92022R	92022-1339 WASHER, 32, 3X42X3.2	AR	1	
	92022S	92022-1340 WASHER, 32, 3X42X3.4	AR	1	
	92022T	92022-212 WASHER, 22, 3X35X1.6	AR	2	
	92022U	92022-213 WASHER, 22, 3X35X1.2	AR	2	
	92026	92026-1020 SPACER, 22X35, 5X1.0	AR	2	
	92027	92027-1455 COLLAR, 29X40X25	AR	1	
	92028	92028-1155 BUSHING, 2ND GEAR	AR	1	
	92028A	92028-1155 BUSHING, OUTPUT SHAFT	AR	1	
	92033	92033-025 RING-SNAP, 22MM	AR	2	
	92045	92045-1028 BEARING-BALL, 5305NSH2	AR	1	
	92045A	92045-1034 BEARING-BALL, 63/28NC3	AR	1	
	92046	92046-031 BEARING-NEEDLE, FWF-223014	AR	2	
	92048	92048-1023 RACE, DRIVE SHAFT BEARING	AR	1	
	480	480J2800 CIRCRIP-TYPE-C, 28MM	AR	2	
	480A	480J3200 CIRCRIP-TYPE-C, 32MM	AR	2	

9-2. Transmission

E1361-00-0

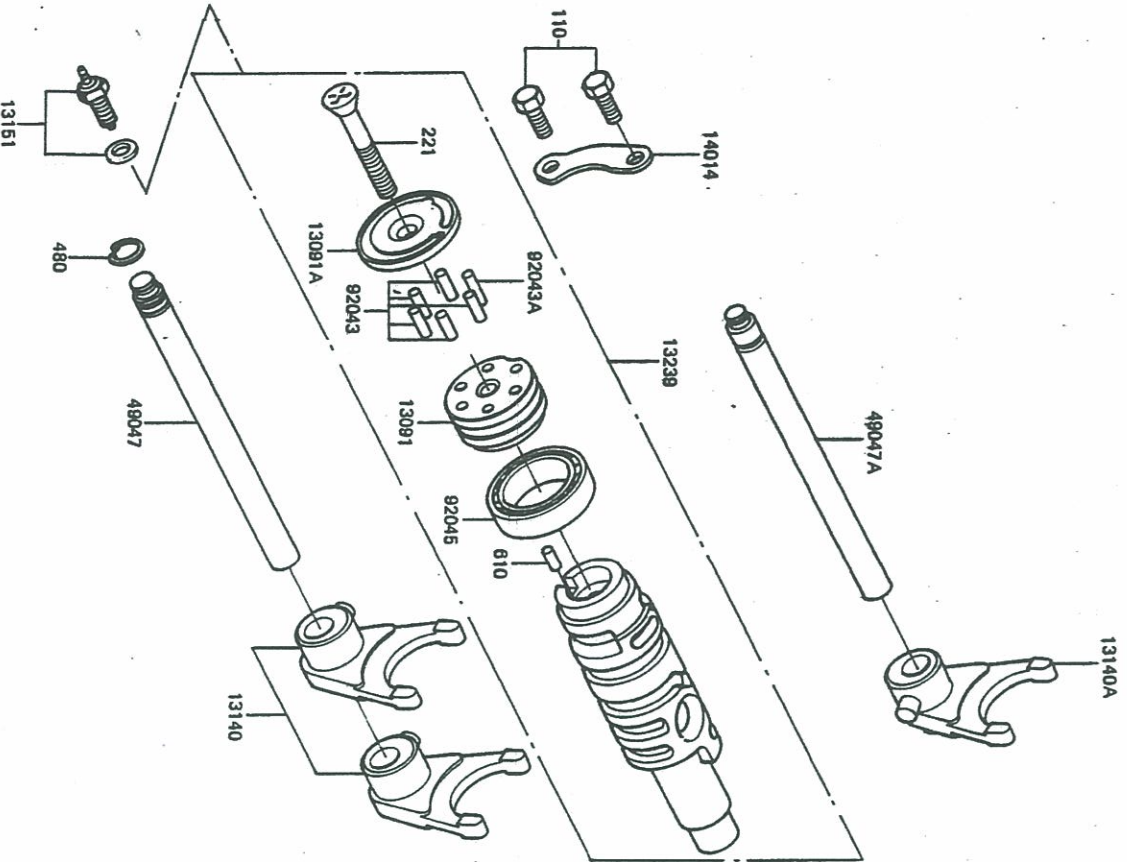


Ref. No.	Part No.	Description	Spec Code	Quantity ~ ≤ 1000
600	600A0600	BALL-STEEL, 3/16"		3
670	670B1508	O RING, 8MM		1



E1362-0009

10. Change Drum, Shift Fork



Ref. No.	Part No.	Description	Spec Code	Quantity - KZ199
13091	13091-1087	HOLDER/CHANGE DRUM PIN		1
13091A	13091-1088	HOLDER/CHANGE DRUM PIN		1
13140	13140-1045	FORK-SHIFT		2
13140A	13140-1046	FORK-SHIFT		1
13151	13151-5003	SWITCH-COMP		1
13239	13239-1060	DRUM-ASSY-CHANGE		1
14014	14014-1015	USE ONLY)		1
49047	49047-1013	PLATE-POSITION		1
49047A	49047-1014	ROD-SHIFT		1
92043	92042-014	ROD-SHIFT		5
92043A	92042-020	PIN/DOWEL, 4X15, 8		1
92045	92045-1035	DRUM-ASSY-CHANGE		1
110	110G0616	USE ONLY)		1
221	221B0545	BEARING-BALL, 6806		2
480	480J1200	BOLT, 6X16		1
610	610A0410	SCREW-CSK-CROS, 6X45		1
		CIRCRIP-TYPE-C, 12MM		1
		ROLLER, 4X10		1